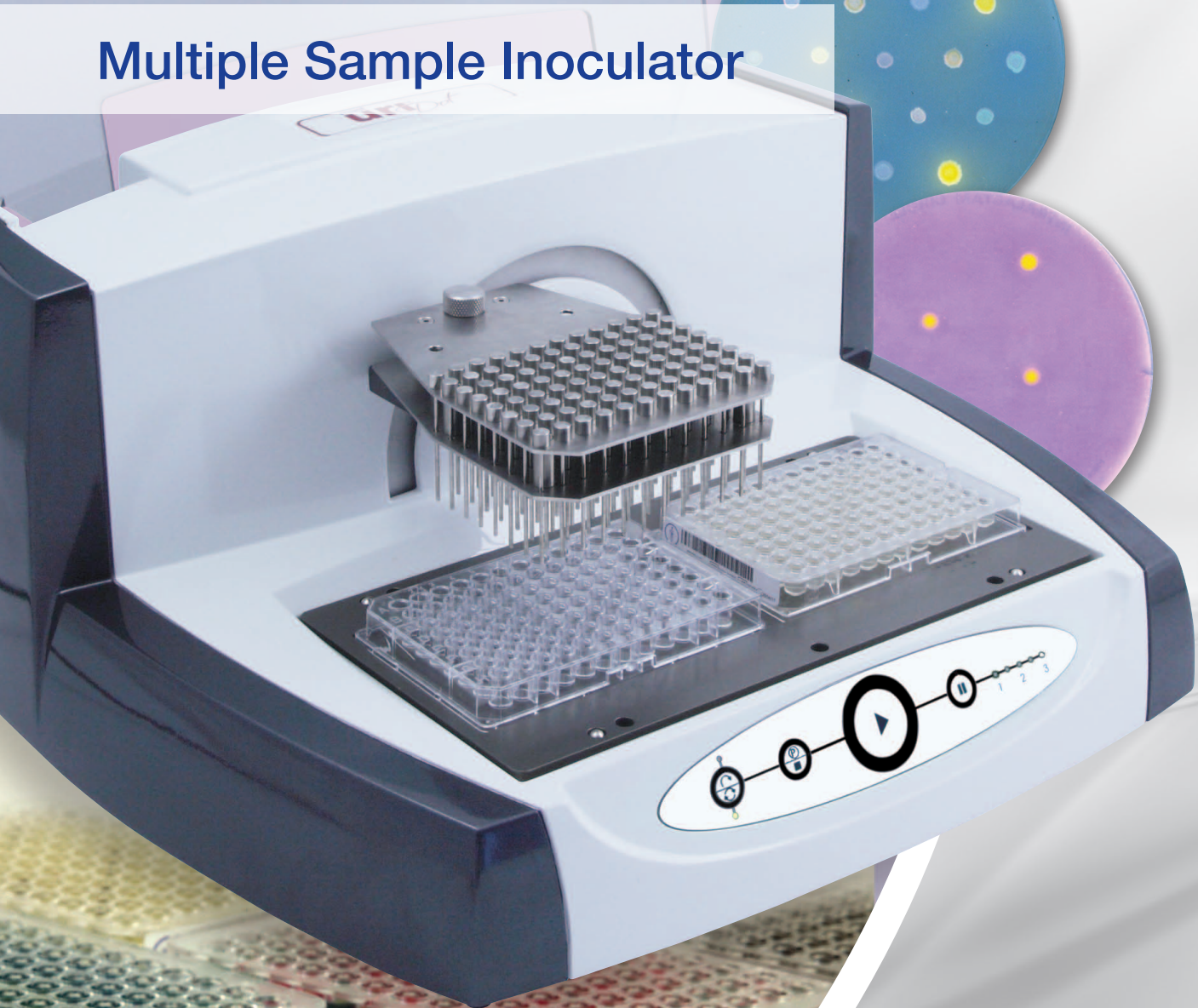


IVD solutions through partnership



mast  
**uri<sup>®</sup>**  
*Dot*

## Multiple Sample Inoculator



- **Rapid**  
Simultaneous inoculation
- **Accurate**  
Standardised inocula
- **Adaptable**  
Stand-alone or with Mast Uri<sup>®</sup> System

# Mast Uri<sup>®</sup>Dot Accessories

## Inoculum Pin



SCAN110 - 0.3µl

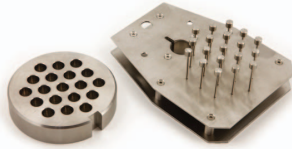
SCAN110N - 1.0µl

## Marker Assembly



SCAN120

## Equipment Set for 19-point inoculation (pot, head and pins)



SCANES019 - 0.3µl

SCANES019N - 1.0µl

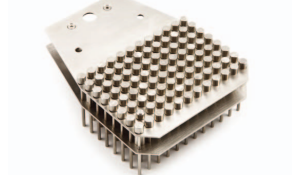
## Equipment Set for 36-point inoculation (pot, head and pins)



SCANES036 - 0.3µl

SCANES036N - 1.0µl

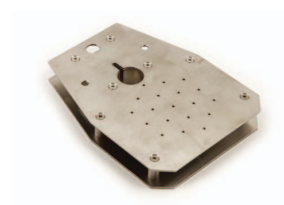
## Equipment Set for 96-point inoculation (head and pins)



SCANES096 - 0.3µl

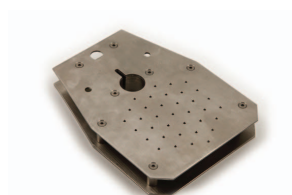
SCANES096N - 1.0µl

## Inoculum Head for 19 pins



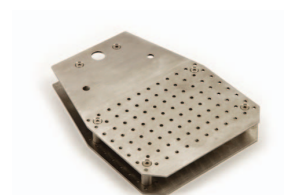
SCAN111SS - 0.3µl

## Inoculum Head for 36 pins



SCAN112SS - 0.3µl

## Inoculum Head for 96 pins



SCAN496 - 0.3µl

SCAN496N - 1.0µl

## Inoculum Pot 19 well



SCAN113SS

## Inoculum Pot 36 well



SCAN114SS

v 2.0 CEA 03/13

**United Kingdom**  
Mast Group Ltd.  
Mast House  
Derby Road, Bootle  
Merseyside L20 1EA

Tel: + 44 (0) 151 933 7277  
Fax: + 44 (0) 151 944 1332  
e-mail: sales@mastgrp.com

**Germany**  
Mast Diagnostica GmbH  
Feldstrasse 20  
DE-23858 Reinfeld

Tel: + 49 (0) 4533 2007 0  
Fax: + 49 (0) 4533 2007 68  
e-mail: mast@mast-diagnostica.de

**France**  
Mast Diagnostic  
115 Rue Jules Barni  
CS91106  
80011 Amiens CEDEX 1

Tél: + 33 (0) 322 80 80 67  
Fax: + 33 (0) 322 80 99 22  
e-mail: info@mast-diagnostic.fr