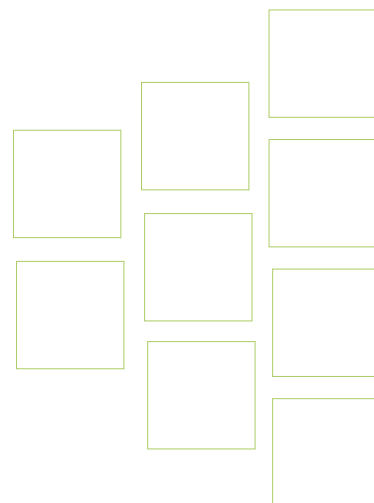


HEp-2000[®]

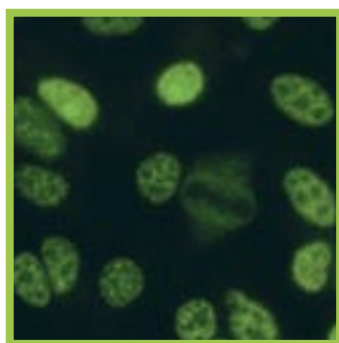
The Original



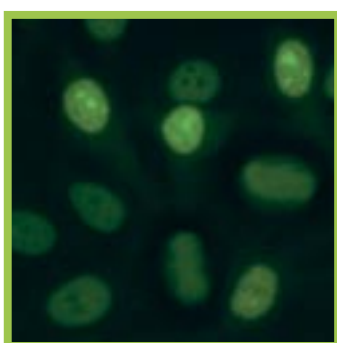
Imitation is the sincerest form of flattery.
Imitation is others' recognizing our leadership.
Imitation is an acknowledgement of our innovation.

At Immuno Concepts we've set the standard for quality since 1980, consistently improving the quality of ANA testing and setting standards which others attempt to imitate. Your substrate should be as authentic as the signature on your results. HEp-2000[®] — There is no substitute. Accept no imitations.

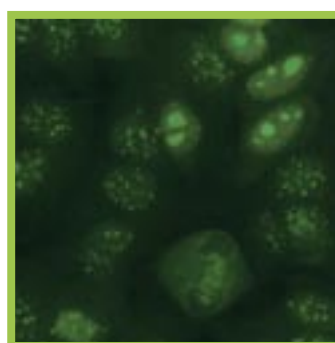
HEp-2000[®] — Still the only transfected ANA substrate!



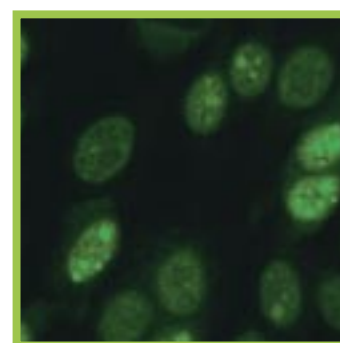
Speckled and SSA/Ro



Homogeneous and SSA/Ro



Centromere and SSA/Ro



SSA/Ro

Delivering critical ANA results is the challenge. HEp-2000[®] is the solution.

“This method (HEp-2000[®]) reliably reveals the presence of anti-SSA/Ro antibodies, one of the most common ANA in clinical practice, which often is missed on routine IIF ANA (1).”

Diagnostic challenges in systemic rheumatic disease

1. Over half of Lupus patients suffer for 4 years and see 3 or more doctors from onset of symptoms until diagnosis (2).
2. In Sjögren’s syndrome, early diagnosis and treatment are important for preventing complications. Symptoms may overlap with or “mimic” those of other diseases including lupus, rheumatoid arthritis, fibromyalgia, chronic fatigue syndrome, and multiple sclerosis. The average time from onset of symptoms to diagnosis is over six years (3).
3. A recent study published in the New England Journal of Medicine reported that on average, at least one antinuclear antibody was present 3 years prior to the clinical diagnosis of SLE, and at the time of diagnosis there were often 3 autoantibodies present. Earliest antibodies were ANA’s, SSA/Ro and SSB/La (4).

HEp-2000[®] provides scientifically proven solutions

1. 8 - 11.7% of ANA positive patient samples tested have SSA/Ro present (5)
2. SSA/Ro is frequently the first antibody to be detected (4)
3. 6 - 15% of patients with SSA/Ro antibodies are missed on traditional ANA screens (6,7)
4. “... the sensitivity and specificity of this stably-transfected HEp-2000[®] substrate to detect anti-SSA Ro is remarkable” (5).

Accept no substitutions or imitations.
HEp-2000[®] — The original, and still the best!

BIBLIOGRAPHY

1. Wiik AS, Gordon TP, Kavanaugh AF, et al. Cutting edge diagnostics in rheumatology: the role of patients, clinicians, and laboratory scientists in optimizing the use of autoimmune serology. *Arthritis Rheum.* Apr 15 2004;51(2):291-298.
2. Lupus Foundation web page, 2003
3. Sjögren’s Syndrome Foundation web page, 2003
4. Arbuckle MR, McClain MT, Rubertone MV, et al. Development of autoantibodies before the clinical onset of systemic lupus erythematosus. *New England Journal of Medicine.* Oct 16 2003;349(16):1526-1533.
5. Fritzler MJ, Hanson C, Miller J, Eystathioy T. Specificity of autoantibodies to SS-A/Ro on a transfected and overexpressed human 60 kDa Ro autoantigen substrate. *J.Clin.Lab.Anal.* 2002;16:103-108.
6. Keech CL, McCluskey J, Gordon TP. Transfection and overexpression of the human 60-kDa Ro/SS-A autoantigen in HEp-2 cells. *Clin.Immunol.Immunopathol.* 1994;73:146-151.
7. Pollock W, Toh BH. Routine immunofluorescence detection of Ro/SS-A autoantibody using HEp-2 cells transfected with human 60 kDa Ro/SS-A. *J.Clin.Pathol.* 1999;52:684-687.

Alleinvertrieb für Bundesrepublik Deutschland

MAST DIAGNOSTICA

Laboratoriums-Präparate GmbH

Feldstraße 20 Telefon: 04533/2007-0
23858 Reinfeld Telefax: 04533/2007-68

