

IVD solutions through partnership



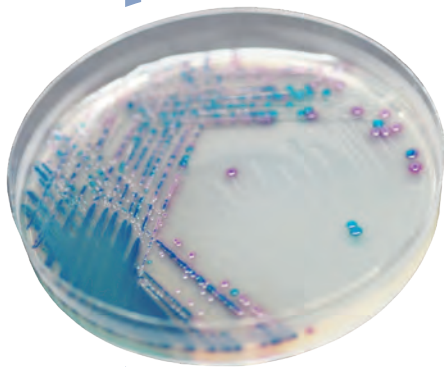
## CHROMagar™ C3G<sup>R</sup>

For overnight detection of Gram-negative bacteria producing Beta-Lactamase


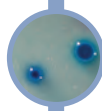
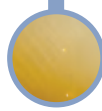
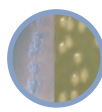



**CHROMagar™**  
The Chromogenic Media Pioneer

# ● CHROMagar™ C3G<sup>R</sup>



## Plate Reading

-  • *E.coli*  
→ dark pink to reddish
-  • *Klebsiella, Enterobacter, Citrobacter*  
→ metallic blue (+/- red halo)
-  • *Proteus*  
→ brown halo
-  • *Pseudomonas*  
→ translucent cream to blue
-  • *Acinetobacter*  
→ cream opaque

## For overnight detection of Gram negative bacteria producing Beta-Lactamase

### Background

β-Lactamase production (ESBL, AmpC,...) is the most common mechanism of β-lactam drug resistance in Gram negative bacteria. Many clinical laboratories currently screen for ESBLs but do not screen for AmpC β-lactamases; though bacteria (mostly *Klebsiella pneumoniae*, *E. coli*, *Enterobacter* and *Proteus*) producing plasmid-mediated AmpC β-lactamases have been responsible for nosocomial outbreaks.

Therefore, it is crucial to ensure that proper surveillance is in place to help establish appropriate guidelines and policies for infection control. Rapid detection of bacteria producing these enzymes also allows for de-escalation to more targeted therapy, to conserve carbapenem antibiotics for more serious infections.

### Medium Performance

CHROMagar™ C3G<sup>R</sup> combines the species colour differentiation and a selectivity that allows the growth of microorganisms with the reduced susceptibility to 3<sup>rd</sup> generation cephalosporins.

- 1 **Fast Results**  
Detection after overnight incubation
- 2 **Species Differentiation**  
Thanks to the chromogenic performances of supplemented CHROMagar™ Orientation. Indeed, the product is composed of a powder base CHROMagar™ Orientation and a supplement to select β-Lactamase producing bacteria.
- 3 **High Sensitivity**  
Unique medium not inhibiting plasmid-mediated AmpC-producing bacteria.
- 4 **Time and workload savings**  
Direct culture from specimen. There is no need of a selective pre-enrichment.

### Medium Description

Powder Base CHROMagar Orientation	Total .....	33 g/L
	Agar .....	15.0
+ CHROMagar™ C3G <sup>R</sup> Supplement (included in the pack)	Peptones and yeast extract.....	17.0
	Chromogenic mix .....	1.0
	Storage at 15/30 °C - pH: 7.0 +/-0.2	
	Shelf Life .....	> 18 months
	Selective mix (Powder form) .....	0.37 g/L
	Storage at 2/8 °C	
	Shelf Life .....	> 18 months

Usual Samples	stools, urine
Procedure	Direct Streaking. Incubation 18-24 h at 35-37 °C. Aerobic conditions

Scientific Publications on this product: available on [www.CHROMagar.com](http://www.CHROMagar.com)  
Please read carefully the instructions for use (IFU document) available on [www.CHROMagar.com](http://www.CHROMagar.com)



#### Manufacturer:

CHROMagar  
4 place du 18 juin 1940 75006 Paris - France  
e-mail: [CHROMagar@CHROMagar.com](mailto:CHROMagar@CHROMagar.com)  
[www.CHROMagar.com](http://www.CHROMagar.com)

**Distributed by:**  
Mast Diagnostica GmbH  
Feldstraße 20  
DE-23858 Reinfeld

Tel: +49 (0)4533 2007 0  
Fax: +49 (0)4533 2007 68  
e-mail: [mast@mast-diagnostica.de](mailto:mast@mast-diagnostica.de)  
[www.mast-group.com](http://www.mast-group.com)

#### Ordering Information

Product	Order Code
CHROMagar™ C3G <sup>R</sup> dry media, 5 liter	15CGRT2
CHROMagar™ C3G <sup>R</sup> ready to use plates, 20 pcs.	201412