

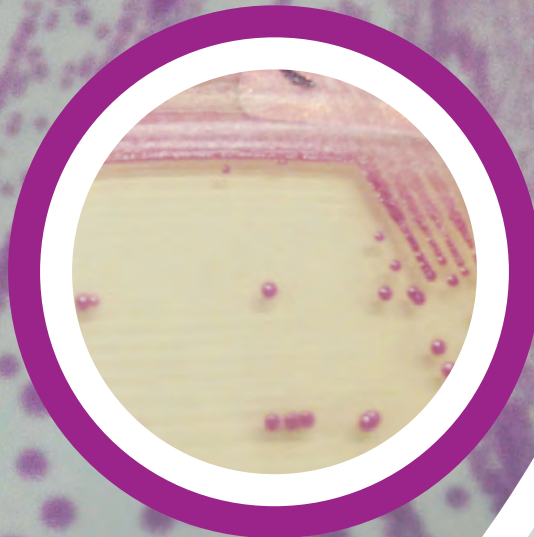
LIM RambaQuick™ StrepB Method

For rapid detection
of *Streptococcus agalactiae* from swabs

Broth enrichment
LIM RambaQUICK™ StrepB



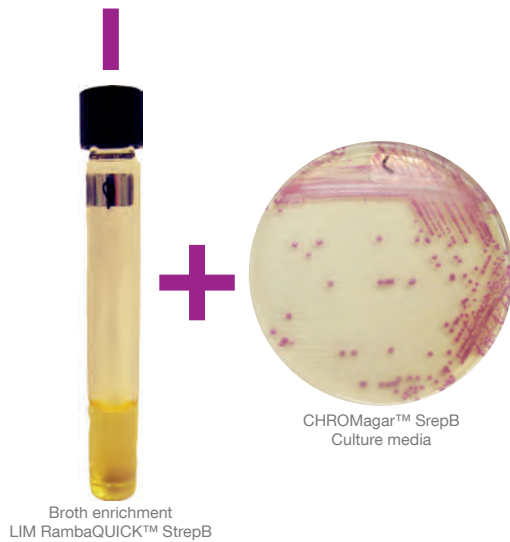
+



CHROMagar™ StrepB
Culture media

LIM RambaQuick™ StrepB Method

For Rapid detection of *Streptococcus agalactiae* from swabs.



Background

The CDC recommends pregnant women to be tested at 35 to 37 weeks of pregnancy for Group B Streptococcal (GBS) carriage by selective enrichment broth of vaginal/anorectal swab samples, followed by subculture. However, the selective broth formulas are not dedicated to the inhibition of *Enterococci*, usually part of the anorectal flora and able to hide the growth of GBS, source of false negative results.

LIM RambaQUICK™ StrepB is a selective enrichment broth **designed to largely reduce the growth of *Enterococci***, while allowing growth of GBS, and, therefore to raise the sensitivity of the prepartum screening method.



LIM RambaQuick™ StrepB Method

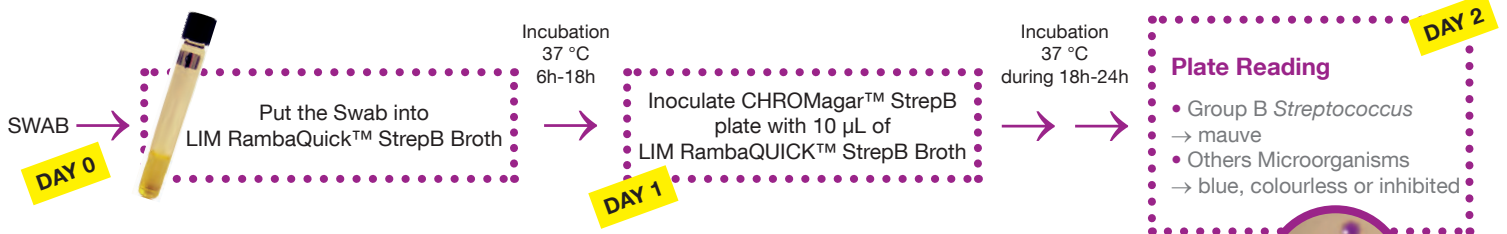


Plate Reading

- Group B *Streptococcus* → mauve
- Others Microorganisms → blue, colourless or inhibited

Performance of the LIM RambaQUICK™ StrepB broth

Compared to classical LIM + subculture method:

Inhibition of most *Enterococci*

LIM RambaQUICK™ StrepB is a selective enrichment broth **designed to largely reduce the growth of *Enterococci***, while allowing growth of GBS, and, therefore to raise the sensitivity of the prepartum screening method.

Broth inoculation

Classical Method recommends overnight broth incubation for classical LIM.

LIM RambaQUICK™ StrepB can be used also with overnight incubation, but has an optimal differentiation at 6h only as suggested in the Dr. Poisson Method Study.

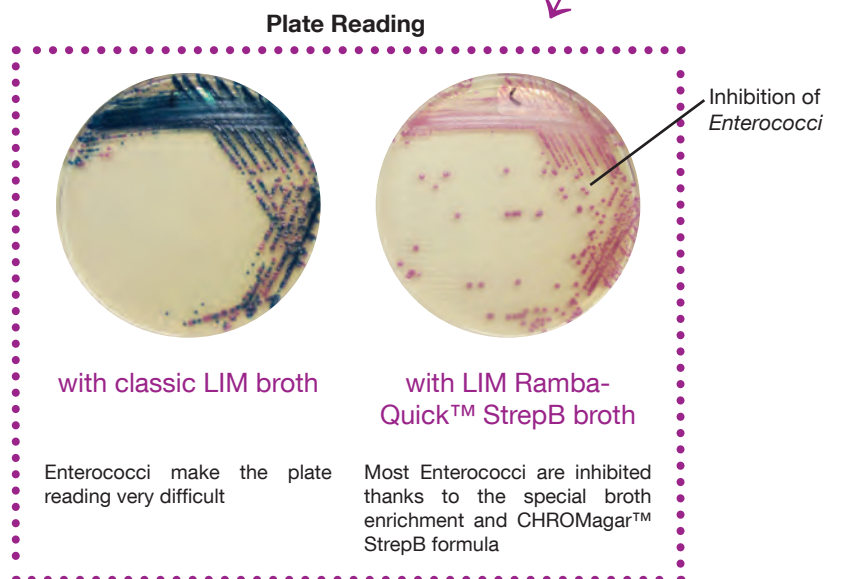
Study: Prepartum vaginal/anorectal GroupB Streptococcus screening: Improvement of the enrichment step by the broth of additive RambaQUICK StrepB; D. Poisson et al. Centre Hospitalier Régional Orleans, France; Journal of Microbiology Methods 89 (2012) 107-109 doi:10.1016/j.mimet.2012.02.012

Easy interpretation of the subculture plate

Easier reading of CHROMagar™ StrepB plate thanks to an intense mauve colony colouration.

Manufacturer:

CHROMagar
4 place du 18 juin 1940 75006 Paris - France
e-mail: CHROMagar@CHROMagar.com
www.CHROMagar.com



with classic LIM broth

Enterococci make the plate reading very difficult

with LIM Ramba-Quick™ StrepB broth

Most Enterococci are inhibited thanks to the special broth enrichment and CHROMagar™ StrepB formula



Distributed by:
Mast Diagnostica GmbH
Feldstraße 20
DE-23858 Reinfeld

Tel: +49 (0)4533 2007 0
Fax: +49 (0)4533 2007 68
e-mail: mast@mast-diagnostica.de
www.mast-group.com

Ordering Information

Product	Order Code
LIM RambaQuick™ StrepB, 5 liter	15LB082
LIM RambaQuick™ StrepB, 50 x 5 mL	206181